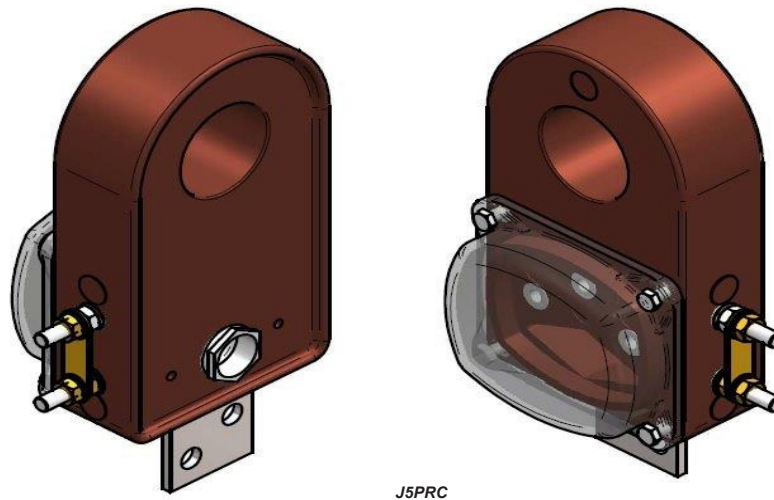


# CURRENT TRANSFORMER FOR MASS PROTECTION - SERIES J5PRC



- Outdoor use
- Dry epoxy resin insulation
- With ground terminal

The J5PRC current transformer is a ring type current transformer with a 53mm inner diameter.

This device is intended to feed mass relay for primary substations without neutral-grounding resistance, or for railway track-side substations.

This transformer is epoxy resin cast. It is equipped with a waterproof cover and a cable gland for secondary cable. An M8 grounding terminal is available.

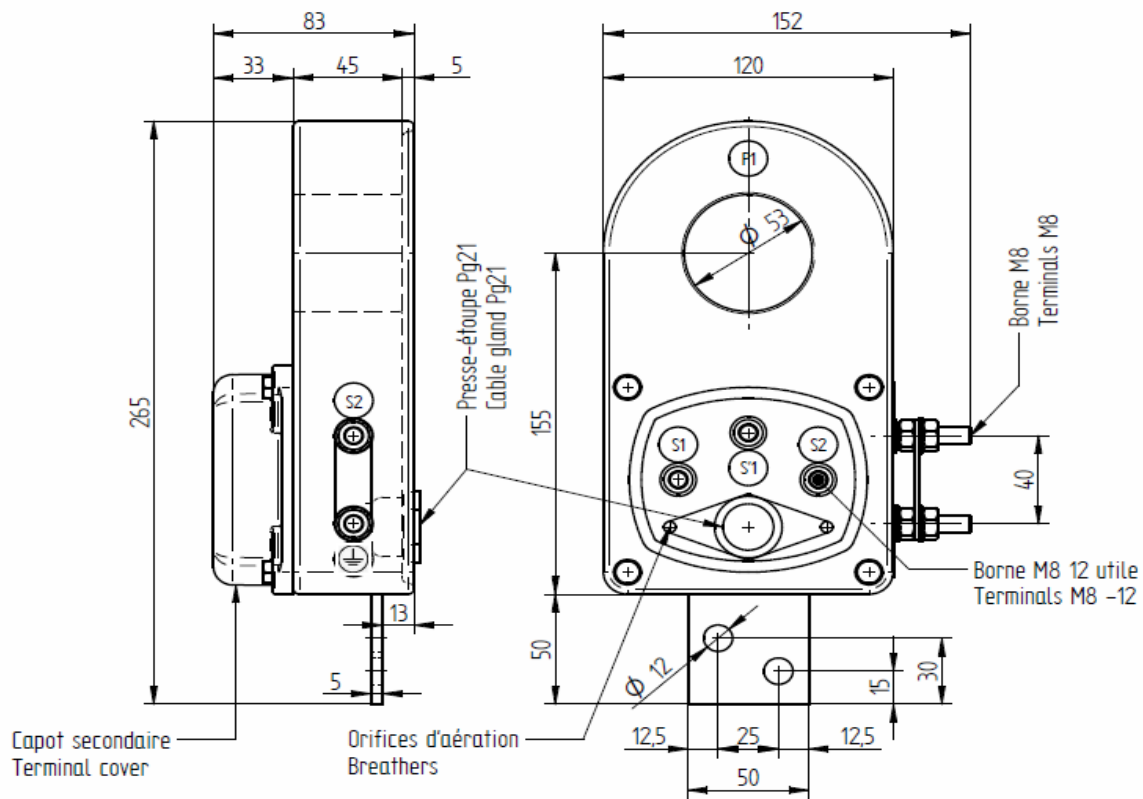
### Technical data

Installation	Outdoor
Isolation voltage	2/5 kV
Frequency	50/60 Hz
Transformation ratio	50-200/1A
Accuracy class	S1-S2 : 200/1A 12VA CL3 $F_s \leq 2$
	S'1-S2 : 50/1A 1VA +/- 3 % to $I_n$ $F_s \leq 5$
Use	Ground fault relays
Ambient temperature	-25°C to + 40°C
Standards	IEC - IEEE - CSA - AS - BS

### Accessories

Sealable terminal cover	Included
-------------------------	----------

## CURRENT TRANSFORMER FOR MASS PROTECTION - SERIES J5PRC



### Installation

- Fasten the CT on metal frame using 2 holes of diameter :12mm.
- Tightening torque for secondary terminals M8 : 7Nm
- Weight: +/- 3 kg
- Never leave the secondary circuit open when the primary conductor is live. High voltages could spark between secondary terminals. They can be dangerous for people and cause the destruction of the device.