

HIGH VIBRATIONS BUSBAR CURRENT TRANSFORMER TR33XY - TR42XY - TR66XY SERIES



TR66

- **Primary current from 100 to 10 000 A**
- **window for 60 to 140 mm bars**
- **Up to 2 secondary windings in same CT**
- **High resistance to environment and vibrations**

This CT range is in cast resin, with excellent withstand to severe environment in terms of temperature, vibrations, salt, moisture and contaminants.

Secondary connections on flying leads.

The current transformer is designed to adapt to various busbar sizes, and accommodate large cores and windings to match demanding requirements in protection and accuracy classes.

Fixing is performed tightening 2 horse shoe-shape clips on amagnetic support plate, enabling very strong hold on busbar.

Technical data

Highest voltage for equipment	0.72 kV
Power-frequency withstand voltage	3 kV
Primary current I _{pn}	From 100 to 10 000 A
Secondary current I _{sn}	5 or 1 A
Length of secondary cables	2.5 m
Frequency	50 or 60 Hz
Rated output	1 to 60 VA
Accuracy class	0.2 - 0.2S - 0.5 - 0.5S - 1 - 3 - 5P - 10P - cIPX
Security factor	5 to 30
Accuracy limit factor	5 - 10 - 15 - 20 - 30
Continuous thermal current	1.2 I _{pn}
Short time thermal current I _{th}	Up to 80 I _n
Dynamic current I _{dyn}	2.5 I _{th}
Insulation class	E
Ambient temperature	-5°C to + 70°C
Standards	IEC - IEEE - CSA - AS - BS

Other characteristics on request

Highest voltage for equipment	Up to 2.4 kV
Power-frequency withstand voltage	Up to 11 kV
Secondary current I _{sn}	any value from 0.005 to 10 A
Number of cores	Up to 2 cores
Frequency	Up to 400 Hz
Length of secondary cables	Upon request. Colors may be adapted too

Accessories / Options

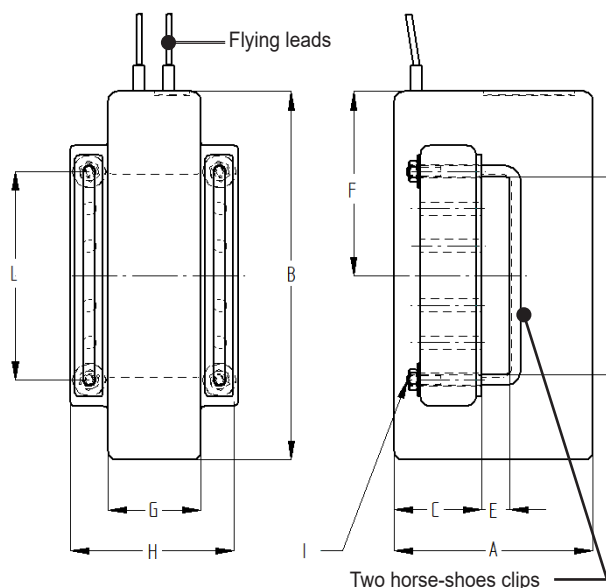
Outdoor variant	On request depending on model
-----------------	-------------------------------

HIGH VIBRATIONS BUSBAR CURRENT TRANSFORMER - TR33xy - TR42xy - TR66xy SERIES

Dimensions

Series	A mm	B mm	C mm	E mm	F mm	H mm	I
TR33xy	107	198	47	16	99	G+40	M6
TR42xy	156	252	64	25	126	G+55	M8
TR66xy	182	315	76	33	157.5	G+60	M8

Type	Weight kg	D mm	G mm
TR330A	2,8	66	50
TR330B	2,8	86	50
TR330C	2,8	106	50
TR331A	3,9	66	70
TR331B	3,9	86	70
TR331C	3,9	106	70
TR332A	4,9	66	80
TR332B	4,9	86	80
TR332C	4,9	106	80
TR333A	5,8	66	90
TR333B	5,8	86	90
TR333C	5,8	106	90
TR334A	6,7	66	100
TR334B	6,7	86	100
TR334C	6,7	106	100
TR335A	7,6	66	110
TR335B	7,6	86	110
TR335C	7,6	106	110
TR336A	8,5	66	120
TR336B	8,5	86	120
TR336C	8,5	106	120
TR420A	11	108	90
TR660A	16	128	100
TR660B	16	168	100
TR661A	18	128	140
TR661B	18	168	140



Installation

Maximum tightening torque:

- nuts on horse-shoe clips M6 : 3 N.m
- nuts on horse-shoe clips M8 : 6 N.m