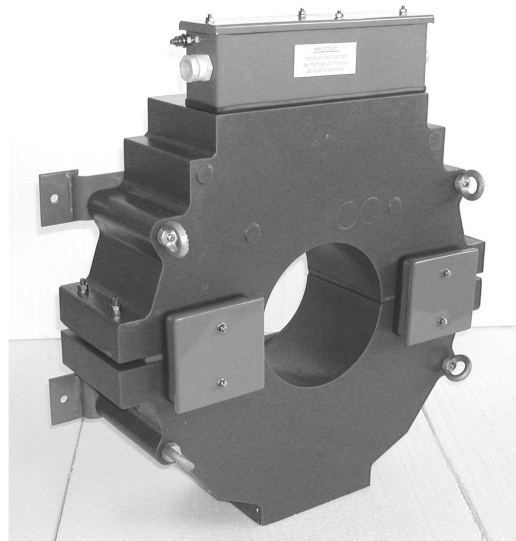


CURRENT TRANSFORMERS FOR CABLES

ATO SERIES



ATOQ



ATOY

- **Outdoor use**
- **Toroidal or split-core type**
- **Specification RTE (French Electricity Transmission System Operator)**
- **Cast in thermoset resin**
- **Measuring, differential protection, or HV outgoing protection**

These Current Transformers have been designed and developed in close collaboration with RTE, the French Electricity Network, to match the most stringent requirements of outdoor substations.

- The «window type» design makes it possible to install them under Extra High Voltage (EHV) environment taking advantage of the insulation of primary (cable, GIS busducts, wall bushing, ...)

- CT's with ref ATOA - ATOY - ATOX - ATOX-O for outgoing differential protection are equipped with a filter capacitor to limit the high frequency voltage peaks showing during connect/disconnect cycles, or in case of fault on the network, and of a voltage limiter protecting CT against overvoltage in case of secondary open circuit.

Technical data

Highest voltage for equipment	0.72 kV
Power-frequency withstand voltage	3 kV
Primary current I _{pn}	100 to 3000 A
Secondary current I _{sn}	5 or 1 A
Frequency	50 Hz
Network nominal voltage	20 - 72.5 - 100 - 245 - 420kV
Accuracy class	0.5 - 5PR10 - 5PR20 - 5P20 - 5P30 - 10P30 TPY
Ring core	Toroidal except for following split-core models ATOY - ATOD - ATOZ - ATOX-O
Short time thermal current I _{th}	2 to 63 kA
Dynamic current I _{dyn}	5 to 171 kA
Inner window diameter	140 to 200 mm
Ambient Temperature	-25°C to + 40°C
Insulation material	Cast resin
Weatherproof terminal cover (IP43)	Vent, M8 earth terminal
Reference standard	RTE CNER - DP - MHT - 13 - 00008 CEI/ CdcT 61869-2

Accessories / Options

Fixing brackets	Advisable if cantilever installed
Filter capacitor	By construction on ATOA - ATOY - ATOX - ATOX-O
Voltage limiter	By construction on ATOA - ATOY - ATOX - ATOX-O

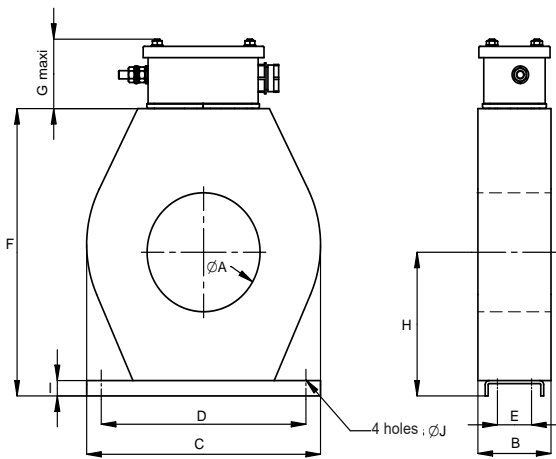
CURRENT TRANSFORMER FOR CABLES - ATO SERIES

Réf. RTE	Code RTE	Codet ENEDIS	Use	Ratio	Power and class
ATOA	554909	7030069	PD TPY	1500/1	10VA cl 5P20 TPY
ATOB	554910	7030070	PDIF	1500/5	20VA cl 5PR 20
ATOC	554911	7030071	PDIF	3000/5	30VA cl 5PR 10
ATOD	554912	7030072	PDIF	1500/5	20VA cl 5PR 20
ATOE	554913	7030073	Metering	2000/5	75VA cl 0,5S FS15
			Metering	1500/5	50VA cl 0,5S FS15
			Metering	1000/5	50VA cl 0,5S FS15
ATOF	554914		PD TPY	1000/5	20VA cl 5P30 TPY
ATOH	554915	7030075	Metering	1000/5	20VA cl 0,5S FS15
			Metering	500/5	20VA cl 0,5S FS15
			Metering	250/5	20VA cl 0,5S FS15
ATOI			PD TPY	1500/5	15VA cl 5P20 TPY
ATOJ	559150	7030076	Metering	2500/5	20VA cl 0,5S FS15
			Metering	2000/5	20VA cl 0,5S FS15
			Metering	1500/5	20VA cl 0,5S FS15
ATOK	559151	7030077	PD TPY	2000/5	15VA cl 5P15 TPY
ATOM			MAX I	1000/5	20VA cl 10P30
ATON			MAX I	1000/5	75VA cl 10P30
ATOO			MAX I	1000/1	15VA cl 10P30
ATOP			MAX I	1500/1	15VA cl 5P20
ATOQ	554921	7030078 6455733	MAX I	1500/5	20VA cl 5P20
ATOR			MAX I	100/1	10VA cl 5P20
ATOS			MAX I	100/5	15VA cl 5P20
ATOT	554924	7030079	PD ME21	1000/5	50VA cl 5PR20
				500/5	50VA cl 5PR20
ATOU	554925	7030080	PD ME21	1500/5	50VA cl 5PR20
				1000/5	50VA cl 5PR20
ATOW	554926	7030081	MAX I	250/5	30VA cl 5P 20
ATOX	575810		PDI	3000/1	5VA cl 5P 20 TPY
ATOX-0	554927		PD TPY	3000/1	5VA cl 5P 20 TPY
ATOY	554928	7030082	PD TPY	1500/1	10VA cl 5P20 TPY
ATOZ	565768	7030083	PD ME21	1500/5	50VA cl 5PR 20
				1000/5	50VA cl 5PR 20

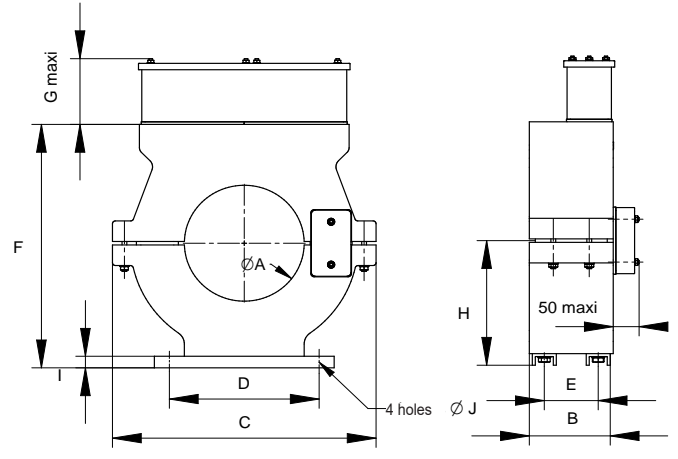
CURRENT TRANSFORMER FOR CABLES - ATO SERIES

Réf. RTE	Type	ØA	B	C	D	E	F	G	H	I	J	Weight kg
ATOA	OREX 210-260-480	210	260	480	250	180	530	150	285	20	14	215
ATOB	OREX 210-80-380	210	80	380	250	55	435	70	225	20	14	25
ATOC	OREX 210-80-380	210	80	380	250	55	435	70	225	20	14	25
ATOD	CRE 200-80-380	200	80	440	250	55	420	70	215	20	14	25
ATOE	OREX 210-80-380	210	80	380	250	55	435	70	225	20	14	20
ATOF	OREX 210-230-450	210	230	450	250	150	505	70	265	20	14	150
ATOH	OREX 210-80-380	210	80	380	250	55	435	120	225	20	14	20
ATOI	OREX 175-220-450	175	220	450	250	150	505	120	265	20	14	160
ATOJ	OREX 210-80-380	210	80	380	250	55	435	70	225	20	14	20
ATOK	OREX 210-230-480	210	230	480	250	150	550	70	285	20	14	180
ATOM	OREX 140-115-320	140	115	320	250	80	355	75	190	15	12	35
ATON	OREX 140-200-320	140	200	320	250	110	355	75	190	15	12	65
ATOO	OREX 140-115-320	140	115	320	250	80	355	75	190	15	12	35
ATOP	OREX 140-115-320	140	115	320	250	80	355	75	190	15	12	35
ATOQ	OREX 210-80-380	210	80	380	250	55	435	70	225	20	14	25
ATOR	OREX 140-200-320	140	200	320	250	110	355	75	190	15	12	65
ATOS	OREX 140-200-320	140	200	320	250	110	355	75	190	15	12	65
ATOT	OREX 210-130-450	210	130	450	250	80	505	120	265	20	14	60
ATOU	OREX 210-105-450	210	130	450	250	80	505	120	265	20	14	40
ATOW	OREX 210-130-480	210	130	480	250	80	550	70	285	20	14	80
ATOX	CRFEF200-260-550	200	260	640	600	300	585	145	295	-	12	250
ATOX-O	CRFE 200-260-550	200	260	640	600	300	585	145	295	32	12	250
ATOY	CRFE 200-220-550	200	220	640	600	300	585	145	295	32	12	220
ATOZ	CRE 200-145-400	200	145	460	250	90	450	75	235	20	14	65

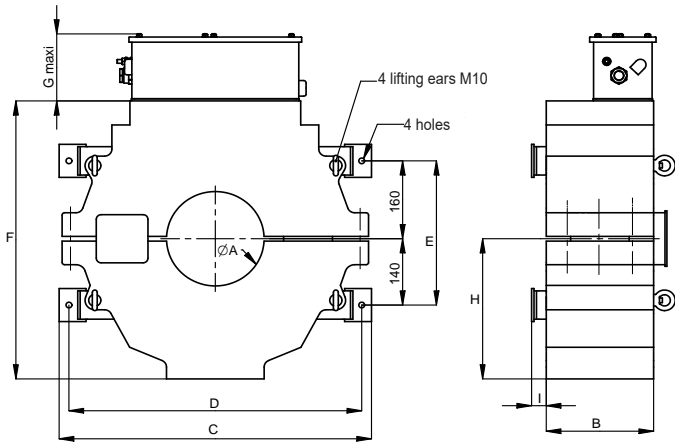
CURRENT TRANSFORMER FOR CABLES - ATO SERIES



ATO Series



ATOD - ATOZ



ATOX - ATOX-O - ATOY

Detailed drawings available on request:

- terminal box
- overall dimensions
- name plate
- connections sketch
- installation procedure (ATOD - ATOX - ATOX-O - ATOY - ATOZ)

Installation

- Installing these CT's may require implementing special supporting fixings on existing structures
- Tightening torque of secondary terminals M8 : 7 Nm.
- Attention ! Never install a split-core CT while primary conductor is with live voltage
- Never leave open the secondary circuit of a current transformer when fed on primary. High voltage may surge at the secondary circuit terminals, and might be dangerous for people, and lead to the destruction of the current transformer.