

CABLE PRIMARY CURRENT TRANSFORMERS STANDARD SERIES



- Primary current from 40 to 3000A
- Inner diameter from 15 to 80 mm
- Measurement and protection

Moulded case current transformers for the measurement of AC currents up to 3000A, with inner diameters from 15 to 80 mm.

They are made of a non-flammable material and have heavy insulation. They are equipped as standard with EA type mounting brackets.

Technical data

Highest voltage for equipment	0.72 kV
Power-frequency withstand voltage	3 kV
Primary current I _{pn}	40 to 3000 A
Secondary current I _{sn}	5 or 1 A
Frequency	50 or 60 Hz
Rated output	1 to 60 VA
Accuracy class	0.5 - 1 - 3
Security factor	5 to 30
Continuous thermal current	1.2 I _{pn}
Short-time thermal current I _{th}	80 I _{pn} .1s
Dynamic current I _{dyn}	2.5 I _{th}
Insulation class	E
Ambient temperature	-25 °C to +40 °C
Case	Thermoplastic UL94 V0 or V1
Standards	IEC - IEEE - CSA - AS - BS

Other characteristics on request

Highest voltage for equipment	Up to 2400 V
Power-frequency withstand voltage	Up to 11 kV
Secondary current I _{sn}	0.005 to 10 A
Frequency	1 to 10000 Hz
Accuracy class	0.1 - 0.2 - 0.2S - 0.5S - 5P - 10P - cIPX
Accuracy limit factor	5 - 10 - 15 - 20 - 30
Multi-ratio	On P25 - P40 - P50 - P60 - P80 models
Multiple cores	On P25 - P40 - P50 - P60 - P80 models
Ambient temperature	-40 °C to +70 °C

Accessories / Options

Mounting brackets	EN type on models: 2Rsc - R36 - P25 - P40 - P50 - P60 - P80
Strengthened mounting brackets	EB type on P80 model MN type on P25 - P40 - P50 - P60 models
Sealable terminal cover (IP20)	Except on 2Psc - 2Msc - 2Gsc models
Tropicalization	

CABLE PRIMARY CURRENT TRANSFORMERS - STANDARD SERIES

Selection table

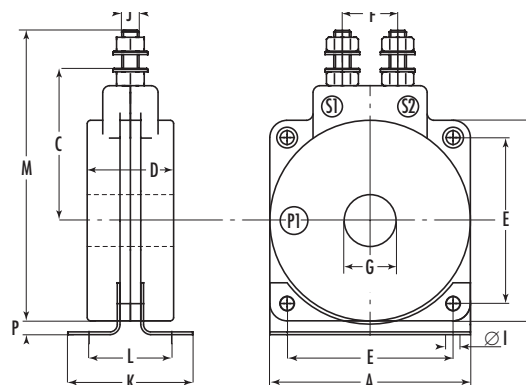
Ip A	Type	Output maximum VA			Ip A	Type	Output maximum VA			
		cl 3	cl 1	cl 0.5			cl 3	cl 1	cl 0.5	
40	1Psc	1.25	-	-	200	P40	45	20	15	
	2Gsc	2.5	-	-		P50	20	10	5	
	2Rsc	2.5	-	-		P60	20	10	5	
	P25	5	-	-		P80	45	20	5	
	P40	2.5	-	-	250	2Psc	10	10	5	
	P50	2.5	-	-		2Msc	15	15	10	
	P60	1.25	-	-		2Gsc	30	20	15	
	P80	2.5	-	-		2Rsc	45	30	20	
50	1Psc	1.25	-	-		P25	60	45	30	
	2Msc	2.5	-	-		R36	30	20	15	
	2Gsc	3.75	-	-		P40	45	30	20	
	2Rsc	5	-	-		P50	30	15	10	
	P25	5	1.25	-	P60	20	10	5		
	P40	5	1.25	-	P80	45	20	10		
	P50	3.75	-	-	300	2Psc	10	10	7.5	
	P60	2.5	-	-		2Msc	15	15	10	
P80	2.5	-	-	2Gsc		30	30	20		
60	1Psc	1.25	-	-		2Rsc	60	45	30	
	2Msc	3.75	-	-		P25	60	60	45	
	2Gsc	5	-	-		R36	45	30	20	
	2Rsc	7.5	2.5	-		P40	45	30	20	
	P25	10	2.5	-		P50	45	30	15	
	P40	7.5	1.25	-	P60	30	20	15		
	P50	5	1.25	-	P80	45	30	15		
	P60	3.75	-	-	400	2Psc	15	10	10	
P80	5	1.25	-	2Msc		20	20	15		
75 or 80	1Psc	3.75	-	-		2Gsc	30	30	30	
	2Psc	2.5	-	-		2Rsc	60	60	45	
	2Msc	5	1.25	-		P25	60	60	60	
	2Gsc	7.5	2.5	-		R36	45	30	20	
	2Rsc	10	3.75	-		P40	60	45	30	
	P25	15	3.75	-		P50	45	30	20	
	P40	10	2.5	-	P60	45	30	15		
	P50	10	2.5	-	P80	60	45	30		
100	1Psc	5	2.5	-	500	2Psc	15	15	10	
	2Psc	5	-	-		2Msc	20	20	15	
	2Msc	7.5	2.5	-		2Gsc	45	45	30	
	2Gsc	10	5	1.25		2Rsc	60	60	45	
	2Rsc	15	5	-		P25	60	60	60	
	P25	20	10	5		R36	45	30	20	
	P40	15	5	2.5		P40	60	60	45	
	P50	15	3.75	1.25		P50	60	45	30	
P60	7.5	2.5	-	P60	45	30	20			
P80	15	3.75	1.25	P80	60	60	45			
125	1Psc	5	3.75	-	600	2Psc	15	15	10	
	2Psc	5	2.5	-		2Msc	30	20	15	
	2Msc	10	5	-		2Gsc	60	45	45	
	2Gsc	15	7.5	3.75		2Rsc	60	60	60	
	2Rsc	20	10	3.75		P25	60	60	60	
	P25	30	10	5		R36	45	30	20	
	P40	20	7.5	5		P40	60	60	45	
	P50	15	5	3.75		P50	60	45	30	
P60	10	5	-	P60	45	30	20			
P80	20	5	2.5	P80	60	60	45			
150	1Psc	5	5	-	700 or 800	P40	60	45	30	
	2Psc	5	2.5	1.25		P50	60	45	30	
	2Msc	10	7.5	3.75		P60	45	30	15	
	2Gsc	20	10	5		P80	60	60	45	
	2Rsc	30	15	7.5		1000	P40	60	45	30
	P25	45	20	10			P60	45	30	15
	P40	20	10	7.5			P80	60	60	45
	P50	20	10	5			1250	P40	60	45
P60	15	7.5	3.75	P60	45	30		15		
P80	20	10	5	P80	60	60		455		
200	2Psc	10	5	2.5	1500	P80	60	60	45	
	2Msc	15	10	7.5		1750	P80	60	60	45
	2Gsc	20	20	10	2000		P80	60	60	45
	2Rsc	30	20	15		2500	P80	60	60	45
	P25	45	30	20	3000		P80	60	60	45
	R36	30	20	15						

Dimensions

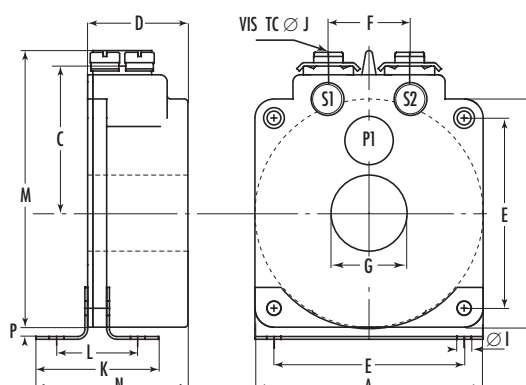
Type	A	C	D	E	F	G	I	J	K	L	M	N	P
	mm	mm	mm	mm	mm	mm	mm	mm	mm	mm	mm	mm	mm
1Psc	58	45	25	48	16	15	4.2	M 5	36	23	84	-	4
2Psc	66	43	23	55	25	22	4.2	M 5	36	24	80	39	3.5
2Msc	66	43	29	55	25	22	4.2	M 5	36	24	80	45	3.5
2Gsc	66	43	47	55	25	22	4.2	M 5	36	24	80	64	3.5
2Rsc	85	59	52	70	25	25	4.2	M 5	56	40	111	-	4.5
R36	85	59	52	70	25	36	4.2	M 5	56	40	111	-	4.5
P25	104	68	56	86	35	25	6.3	M 5	66	42	130	-	5
P40	104	68	56	86	35	39	6.3	M 5	66	42	130	-	5
P50	104	68	56	86	35	49	6.3	M 5	66	42	130	-	5
P60	104	68	56	86	35	60	6.3	M 5	66	42	130	-	5
P80	155	69	56	137	30	80	6.3	M 5	66	44	-	78	5

• Dimensions D,K,L,N can vary according to electrical performance (spacer)
• Tightening torque for secondary terminals M5 = 2.5 N.m

1Psc - 2Rsc - R36 - P25 - P40 - P50 - P60



2Psc - 2Msc - 2Gsc



P80

