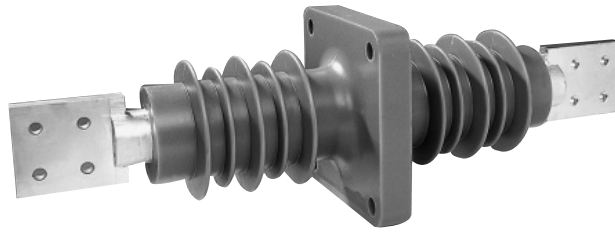


# BUSHING INSULATORS



- **Indoor or Outdoor**
- **Cast epoxy resin**
- **7.2 to 36 kV.**
- **Up to 5000 A**

Bushing insulators, with or without conductor for various applications in electric power generation or distribution.

RS ISOLSEC can design and manufacture any type of bushing insulators or insulating parts in epoxy resin you may require. Please contact us.

A few samples are shown on this page.

## Technical data

Rated insulation level	7.2/20/60kV to 36/70/170 kV
Insulation class	E
Rated current	Up to 5000 A
Type	Indoor or outdoor
Connection surface treatment	depending on the current
Standards	IEC 60137

## Other characteristics on request

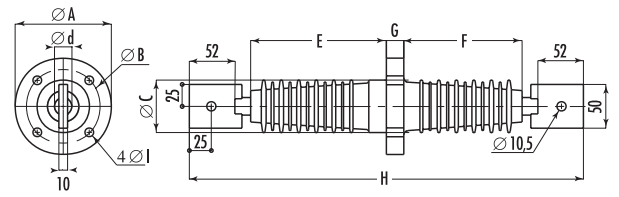
Ambient temperature	- 40°C to + 70°C
---------------------	------------------

# BUSHING INSULATORS

## Selection table and dimensions

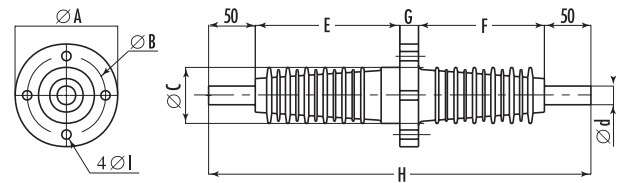
Type	In A	Un kV	d mm	A mm	B mm	C mm	E mm	F mm	G mm	H mm	I mm	Creep dist.	Weight kg
ISOTRA 7,2 B	800	12	20	120	84	60	155	135	20	450	10	245	5
	1250		30		95								70
ISOTRA 24 B	800	24	20	160	130	90	280	235	25	680	12	425	7
	1250		30		130								90

indoor only



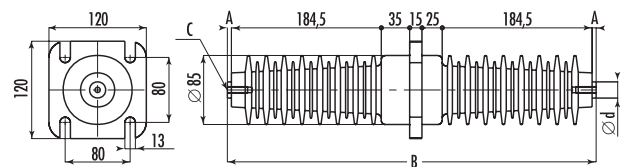
Type	In A	Un kV	d mm	A mm	B mm	C mm	E mm	F mm	G mm	H mm	I mm	Creep dist.	Weight kg
ISOTRA 7,2	800	12	20	120	84	60	155	135	20	410	10	245	3
	1250		30		95								70
ISOTRA 24	800	24	20	160	130	90	280	235	25	640	12	425	5
	1250		30		130								90

indoor only



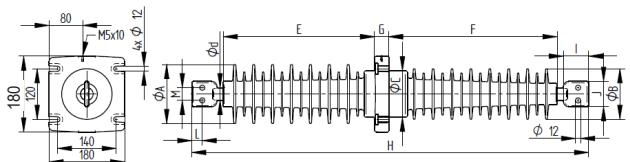
Type	In A	Un kV	d mm	A mm	B mm	C mm	Creep dist.	Weight kg
ISOTRA 22 A	630	24	20	5	454	M8 (25 useful)	530	4
ISOTRA 22 B	630	24	20	40	524		530	5

indoor only



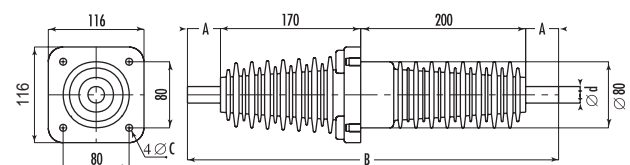
Type	In A	Un kV	d mm	A mm	B mm	C mm	E mm	F mm	G mm	H mm	I mm	Creep dist.	Weight kg
ISOTRA 37	800	36	30	140	120	110	360	401	34	945	60	1040	14
	1250		30										

indoor and outdoor



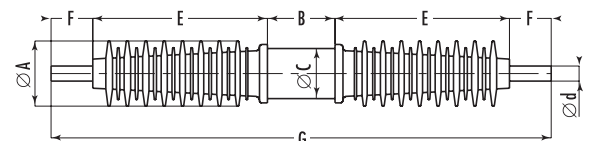
Type	In A	Un kV	d mm	A mm	B mm	C mm	Creep dist.	Weight kg
ISOTRA 23 A	800	24	20	40	450	M10 (15 useful)	365	4
ISOTRA 23 B	1250	12	30	50	470	M10 (15 useful)	365	5
ISOTRA 23 A SDCEM	800	24	20	40	554	M10 (15 useful)	365	5

indoor only



Type	In A	Un kV	d mm	A mm	B mm	C mm	E mm	F mm	G mm	Creep dist.	Weight kg
TIRE 7,2	630	12	18	70	80	60	119	50	420	255	3
	1250		32					88			90
TIRE 24	630	24	18	75	80	60	209	50	600	520	4
	1250		32					92			90
TIRE 36	630	36	20	118	100	110	369	70	980	650	18
	800		25								19
	1250		32								20
	2000		40								21

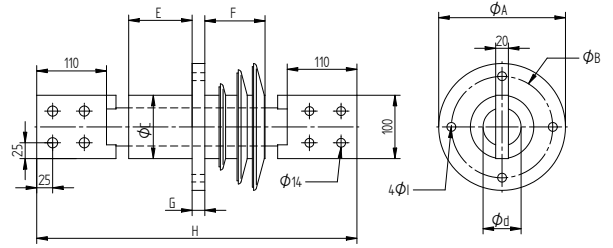
indoor only



# BUSHING INSULATORS

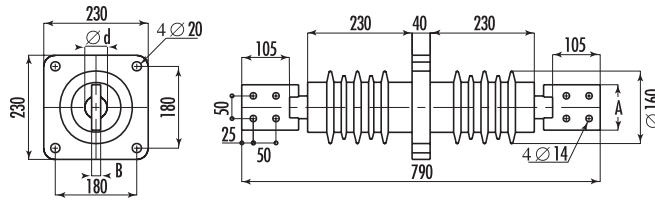
Type	In A	Un kV	d mm	A mm	B mm	C mm	E mm	F mm	G mm	H mm	I mm	Creep dist.	Weight kg
ISOTRA 1 B	4000	7.2	60	200	160	100	100	95	20	505	14	120-300	16

indoor and outdoor



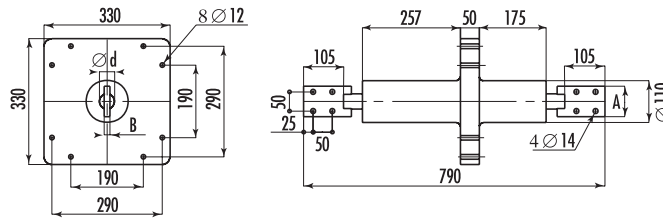
Type	In A	Un kV	d mm	A mm	B mm	Creep dist.	Weight kg
ISOTRA 3 B	1250	24	30	80	10	390	16
	2000		40	80	15		21
	3000		50	100	20		28
	4000		60	100	20		34

indoor only or outdoor 12kV



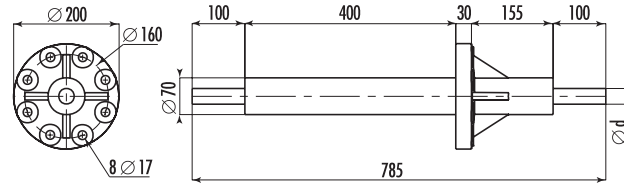
Type	In A	Un kV	d mm	A mm	B mm	Creep dist.	Weight kg
ISOTRA 4 B	1250	24	30	80	10	180 - 265	24
	2000		40	80	15		27
	3000		50	100	20		30
	4000		60	100	20		33

indoor only



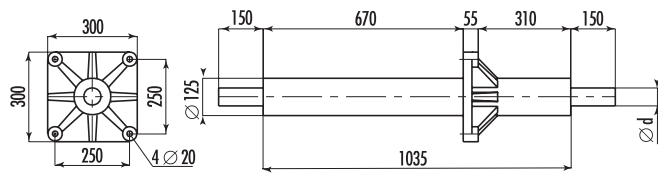
Type	In A	Un kV	d mm	Creep dist.	Weight kg
ISOTRA 12	800	17,5	20	165 - 400	8
	1250	17,5	30		13
	2000	12	40		18

indoor only



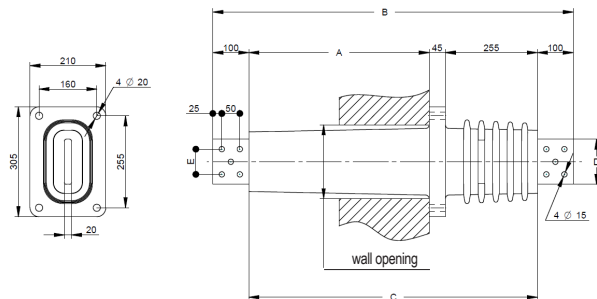
Type	In A	Un kV	d mm	Creep dist.	Weight kg
ISOTRA 24 EDF	630	36	20	320 - 670	37
	800	36	20		37
	1250	24	30		39
	2000	24	40		50
	3000	24	50		55
	4000	24	60		60
5000	24	65	80		

indoor only



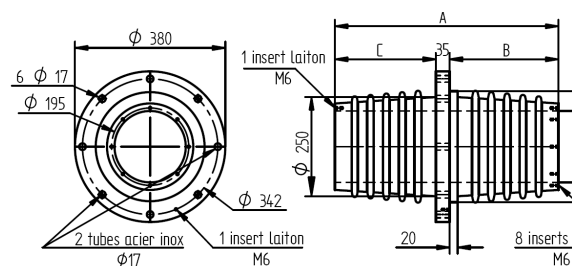
Type	In A	Un kV	A mm	B mm	C mm	D mm	E mm	Drillings mm	Creep dist.	Weight kg
TM 24 A	2000	24	670	1170	970	80	40	4 x Ø15	375	39
	2500							4 x Ø15		43
	3000							5 x Ø15		45
TM 24 B	2000	24	500	1000	800	100	50	4 x Ø15	375	39
	2500							4 x Ø15		42
	3000							5 x Ø15		46

indoor only



Type	Un kV	A mm	B mm	C mm	Creep dist.	Weight kg
PA 24	24	565	275	255	375	28
PA 24 VA	24	625	305	285	405	30
PA 36	36	745	365	345	440	33

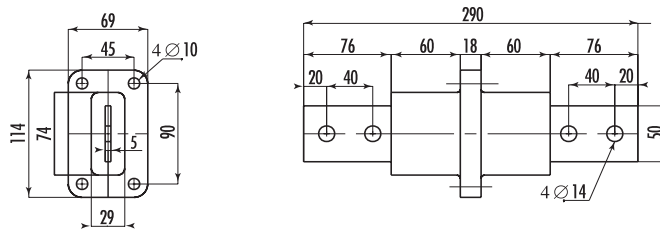
indoor only



## BUSHING INSULATORS

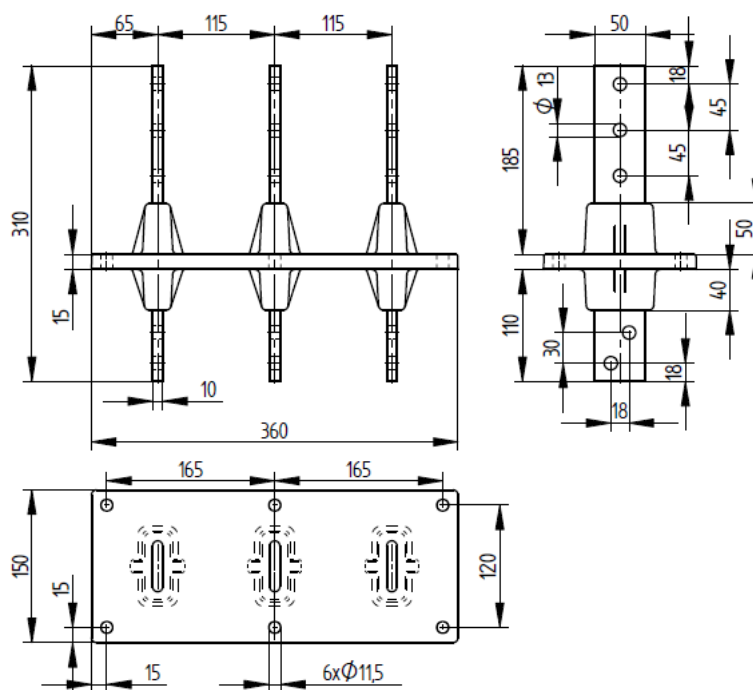
Type	In A	Un kV	Creep dist.	Weight kg
ISOTRA 5	750	3.6	60	1

indoor only



Type	In A	Un kV	Creep dist.	Weight kg
ISOTRA 6T	2000	3.6	50	6

indoor only



### Installation

Maximum tightening torque:

- terminals M6 : 2 N.m
- terminals M8 : 13 N.m
- terminals M10 : 20 N.m
- on hole resin Ø10 : 20 N.m
- on hole resin Ø12 : 40 N.m