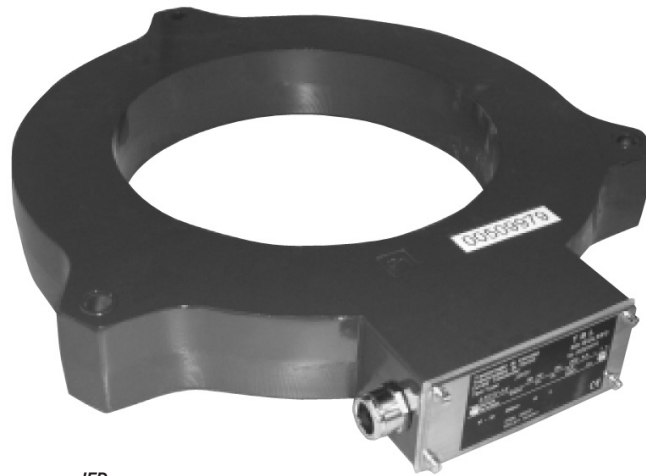


“ BUSHING ” CURRENT TRANSFORMERS - J..FD.. SERIES



JFD

- **Indoor or outdoor**
- **Primary current from 50 to 10,000 A**
- **Inner diameter from 200 to 400 mm**
- **Measure and protection**

Current transformers moulded in self extinguishing resin for the measure of AC currents from 50 up to 10,000A.

With inner diameters from 200 to 400 mm, these transformers are often used on power transformers bushings or on generator bus bars. 2 versions, indoor or outdoor, are available.

The outdoor version is equipped with a weatherproof terminal box fitted with 2 cable glands.

Technical data

Highest voltage for equipment	0.72 kV
Power-frequency withstand voltage	3 kV
Primary current I _{pn}	50 to 10,000 A
Secondary current I _{sn}	5 or 1 A
Frequency	50 or 60 Hz
Rated output	1 to 60 VA
Accuracy class	0.5 - 1 - 3
Security factor	5 to 30
Continuous thermal current	1.2 I _{pn}
Short-time thermal current I _{th}	80 I _{pn} .1s
Dynamic current I _{dyn}	2.5 I _{th}
Insulation class	F
Ambient temperature	- 5°C to + 40°C
Standards	IEC - IEEE - CSA - AS - BS - UNE

Other characteristics on request

Highest voltage for equipment	Up to 2,400 V
Power-frequency withstand voltage	Up to 11 kV
Secondary current I _{sn}	0.005 to 10 A
Frequency	1 to 10 000 Hz
Accuracy class	0.1 - 0.2 - 0.2S - 0.5 - 0.5S - 1 - 3 - 5P 10P - cIPX
Accuracy limit factor	5 - 10 - 15 - 20 - 30
Multi ratio	Always by secondary connections
Multiple cores	
Ambient temperature	- 40°C to + 70°C

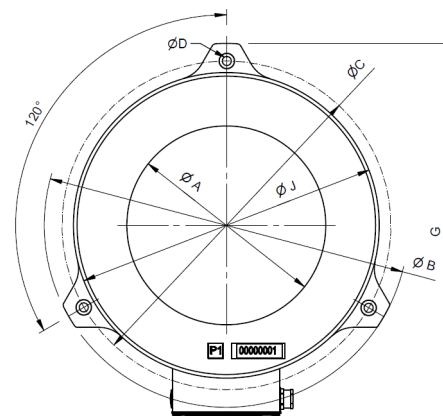
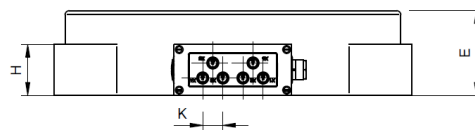
Accessories / Options

Sealable cover for secondary terminal (IP20)	Option
S1-S2 on P1 or P2 side	Option

" BUSHING " CURRENT TRANSFORMERS - J..FD.. SERIES

Selection table

Ip A	Type	Rated output Max VA			Ip A	Type	Rated output Max VA		
		cl 3	cl 1	cl 0,5			cl 3	cl 1	cl 0,5
<450	J1FD-1	50	20	10	<5000	J1FD-1	350	350	350
	J1FD-2	200	120	40		J1FD-2	350	350	350
	J1FD-3	350	200	75		J1FD-3	350	350	350
	J1FD-4	350	300	115		J1FD-4	350	350	350
	J2FD-1	50	25	10		J2FD-1	350	350	350
	J2FD-2	150	75	25		J2FD-2	350	350	350
	J2FD-3	300	140	50		J2FD-3	350	350	350
	J2FD-4	350	220	75		J2FD-4	350	350	350
	J3FD-1	25	15	5		J3FD-1	350	350	350
	J3FD-2	120	45	15		J3FD-2	350	350	350
	J3FD-3	220	90	25		J3FD-3	350	350	350
	J3FD-4	300	125	45		J3FD-4	350	350	350
	J4FD-2	120	45	15		J4FD-2	350	350	350
	J4FD-3	250	90	30		J4FD-3	350	350	350
J5FD-2	75	20	7.5	J5FD-2	350	350	350		
J7FD-2	350	175	60	J7FD-2	350	350	350		
<11000	J1FD-1	300	200	150					
	J1FD-2	350	350	300					
	J1FD-3	350	350	350					
	J1FD-4	350	350	350					
	J2FD-1	200	125	100					
	J2FD-2	350	350	275					
	J2FD-3	350	350	350					
	J2FD-4	350	350	350					
	J3FD-1	100	75	50					
	J3FD-2	300	250	150					
	J3FD-3	350	350	280					
J3FD-4	350	350	300						
J4FD-2	300	300	150						
J4FD-3	350	350	200						
J5FD-2	200	150	75						
J7FD-2	350	350	350						



Installation

Max tightening torques :
- M6 terminals: 4 N.m

Dimensions

Type	Weight kg	ØA mm	ØB mm	ØC mm	ØD mm	E (depending on type)				G mm	H mm	ØJ mm
						1 mm	2 mm	3 mm	4 mm			
J1FD-1..4	25	200	476	440	14	60	100	150	200	493	60	400
J2FD-1..4	23	230	476	440	14	60	100	150	200	493	60	400
J3FD-1..4	21	260	476	440	14	60	100	150	200	493	60	400
J4FD-1..4	30	300	531	486	12	-	100	160	-	545	60	453
J5FD-1..4	28	330	531	486	12	-	100	-	-	545	60	453
J7FD-2	75	400	786	750	12	-	125	-	-	800	60	710